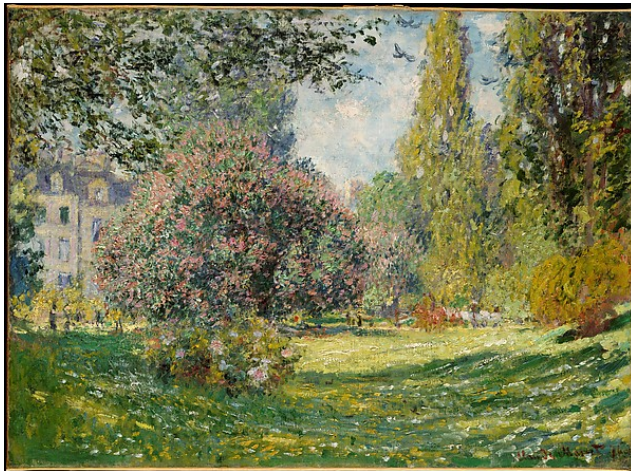


Philosophy @ The Virtual Art Museum: Landscapes



Jacob van Ruisdael, *A Landscape with a Ruined Castle and a Church*, 1665-70, National Gallery (UK)

1. What features of the landscape stand out in this painting?
2. How is nature depicted in the painting?
3. What do you think is the significance of the ruins of the castle in the right foreground of the painting?
4. How does this painting present the relationship between human beings and nature?



Claude Monet, *Landscape: The Parc Monceau*, 1876, The Metropolitan Museum of Art

1. What features of this landscape painting stand out?
2. How is nature depicted in this painting?
3. What is the relationship between the building in the left background and the rest of the painting?
4. How does this painting present the relationship between human beings and nature?



Hokusai, *The Great Wave off Kanagawa*, 1830-1833, The Metropolitan Museum of Art

1. What features strike you in this woodblock print?
2. How is nature depicted in this sea- and landscape?
3. How does this woodcut present the relationship between human beings and nature?
4. Can you tell that this work is by a Japanese artist? How? What is the significance of your answer?

Philosophy Questions:

1. Different works of art present different views of nature. Do you think that nature has a particular essence, such as threatening or peaceful? Why or why not? Does nature have a particular relationship to human beings? If so, what is it and why do you think so?
2. Based on the paintings you have seen, do you think Westerners have a different view of nature than non-Westerners? Why or why not?
3. In all of the paintings you have looked at, “nature” always shows some sign of human presence. Is there a correct way for human beings to interact with nature? What might it be and why do you think so?

**This page was printed from the website Philosophy @ The Virtual Art Museum and is reproduced in accordance with a Creative Commons Attribution-NonCommercialShareAlike 4.0 International License.*